

# !WARNING!

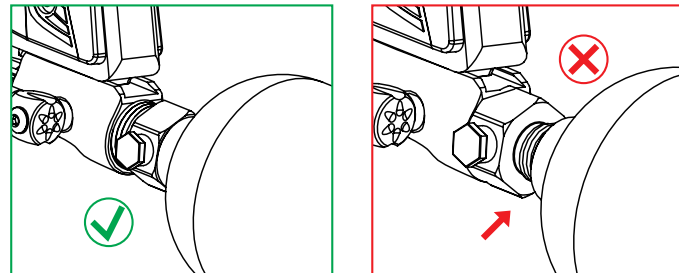
## IMPORTANT SAFETY INSTRUCTION AND GUIDELINES

- This Paintball Marker is NOT A TOY. Misuse can cause serious injury or death.
- Recommend 18 years or older to purchase this product. Person under 18 must have adult supervision.
- Read this manual, understand and follow the manual instructions for using this product.
- Eye and face protection specially designed for paintball use, must be worn by user and persons within range at all times.
- Treat all paintball markers as if it were loaded and able to fire.
- Never look down the barrel or breech area of a marker.
- Always use barrel blocking device when the marker is not in use.
- Always chronograph this marker before playing paintball.
- Never shoot any marker at velocities exceeds 300 FPS (Feet Per Second), or velocities which is greater than local fields or national laws allow.
- Ensure all air lines and fittings are tightened and secured before installing the air tanks.
- Do not shoot at people, animals, houses, cars or anything is not related to the sport of paintball.
- Always keep the marker in Safe mode until ready for use.
- Fire only 0.68 caliber paintballs with this marker.
- Always make sure the bolt is in the un-cocked position when marker is not in use.
- Any modifications or tampering of original factory parts will cause all warranties and liabilities from Azodin.
- This owner's manual should always accompany this marker for reference and in the event of resale and new ownership.

# !WARNING!

## IMPORTANT CO2/ HPA AIR TANK SAFETY INSTRUCTION AND GUIDELINES

- Tank valves must be installed or removed by qualified personnel.
- All tanks must be retested before the expiration date.
- Improper use, filling, storage of this air tank may cause death, serious injury and property damage.
- Air tanks must be filled only by properly trained personnel.
- Do not over pressurize. Do not expose pressurized tanks to temperatures in excess of 130F° degrees (54°C).
- Do not expose tanks to corrosive materials and do not clean with caustic cleaners.
- Do not alter tanks in any way.
- Tanks heated up to a temperature of 250F° degrees (54°C) or more must be condemned or re-qualified.
- Keep air tanks out of reach of children.
- The valve should NEVER detach from the tank canister. Should this occur, seek assistance from a qualified airmith immediately.
- Air tanks are use for the sport of paintball only.



When removing the air tank from the marker, check to see if the regulator / bonnet is unscrewing from the tank. If so, stop unscrewing the air tank from the marker and contact a qualified airmith for further assistance.

Air tanks should unscrew from the marker's On/Off ASA when the tank is turned counterclockwise. The regulator / bonnet should stay on the tank during the removal process.

HPA / N2 air tanks store high pressure air. If this air is released without

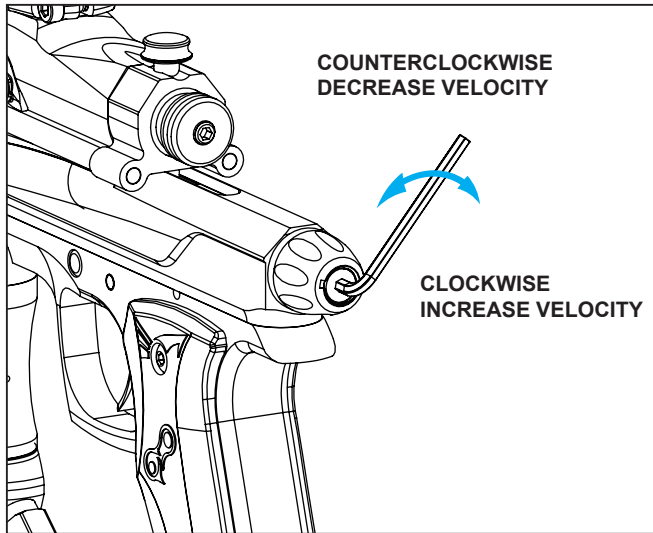
# GETTING STARTED

1. Screw the 2-piece barrel into the marker's body.
2. Place barrel blocking device on the tip of the barrel.
3. Turn the knob, on the front of the On/Off Bottom ASA (OFBA2), counterclockwise. Attach the air tank by turning it clockwise into the ASA, until it stops. Turn the knob on the On/Off ASA Clockwise, until it is flush with the body of the ASA.  
CAUTION: Do not use hand tools to screw the air tank into the bottom ASA.
4. Attach a paintball hopper/ loader to the marker's feed neck.
5. Remove the barrel blocking device from the tip of the barrel.
6. Pump the handle back and pull it forward to its starting position.
7. Push the trigger's safety switch from right to left. The marker is now ready to fire.

# GETTING THE MARKER READY FOR STORAGE

1. Push the trigger's safety switch from left to right. This will engage the safety and not allow the trigger to fire the marker.
2. Remove the paintball hopper/loader from the marker's feedneck and clear the breach of any remaining paintballs.
3. Turn the On/Off ASA's knob counterclockwise until you hear air escaping the ASA.
4. Unscrew the tank from On/Off ASA.
5. Unscrew the barrel from the marker.
6. You may now store the marker.

## VELOCITY ADJUSTMENTS

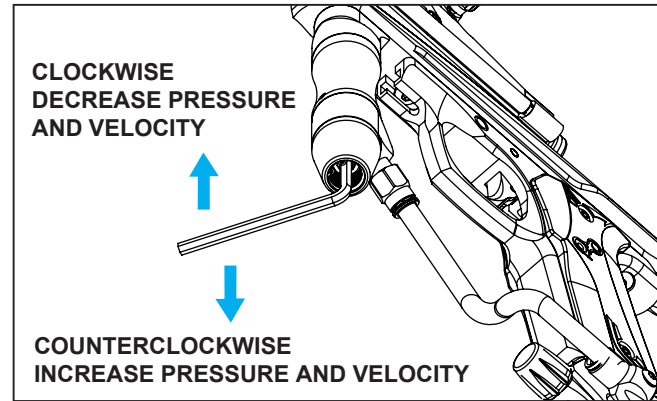


**WARNING:** Do not turn the velocity adjust clockwise more than 6 turns. This may strip the threads on the Velocity Adjuster and End Cap.

To increase your velocity FPS (Feet Per Second), use the allen wrench to turn the Velocity Adjuster (VA01) clockwise.

To decrease your velocity FPS (Feet Per Second), use the allen wrench to turn the Velocity Adjuster (VA01) counterclockwise.

## REGULATOR ADJUSTMENT



To increase the input pressure, use the allen wrench to turn the Rock Steady Seat (RSS2) counterclockwise.

To decrease the input pressure, use the allen wrench to turn the Rock Steady Seat (RSS2) clockwise.

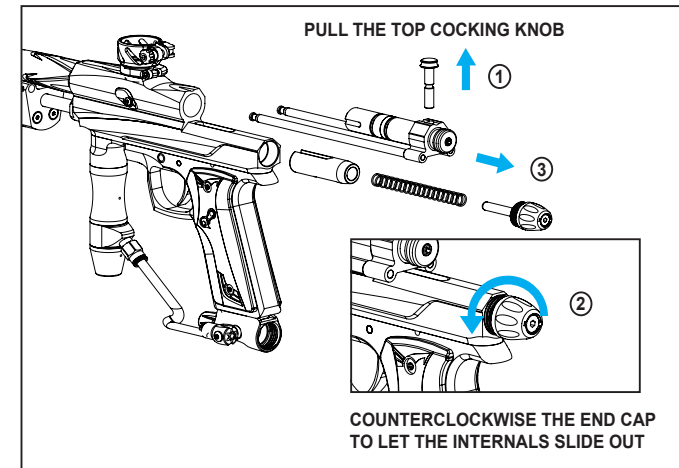
**NOTE:** Contact [tech@azodin.com](mailto:tech@azodin.com) for more information on tuning the KP-III. Always use Velocity Adjuster (VA01) to increase velocity first then increase input pressure.

### RESET THE REGULATOR TO FACTORY PRESSURE

1. Please remove air source and clear the air stored in the marker.
2. Turn the Rocksteady Seat clockwise till it stops (DO NOT FORCE IT PAST THE STOP POINT).
3. Turn the RockSteady Seat counterclockwise two and half turns.

## ASSEMBLY AND CLEANING THE MARKER

Turn the End Cap Counterclockwise to access the internals



**WARNING:** Never remove the internals of the marker while the tank is attached to the marker. Always remove the loader, the air tank, and all paintballs from the marker before disassembly.

## HOW TO CLEAN AND DISASSEMBLE THE REAR INTERNALS

1. Pull the Top Cocking Knob (PBP3) up.
2. Pull the Bolt (PB03) out the back of the Pump Sled (PA01)
3. Turn the End Cap (EC01) counterclockwise until it is free of the marker's body.
4. Remove the Pump Striker Spring (PSS2) from the Marker.
5. Tilt the marker backwards and slide the Pump Striker (PS02) out of the marker.  
It may get caught on the trigger sear. If this happens, pull the stiker out using a finger.  
You may also push the stiker out from the top of the marker with an allen key.
6. Use a squeegee or barrel swab to clean the inside of the body.  
Use a towel or rag to remove any paint or debris from the Pump Bolt (PB03).
7. Apply a thin layer of Azodin lube to the Bolt Orings (R015) and the Pump Striker (PS02).

## HOW TO REASSEMBLE THE REAR INTERNALS

1. Insert the Pump Striker (PS02) into the lower tube of the marker. Make sure the U-shapde cut is facing upwards, towards the bolt. The striker will get stuck on the trigger sear. In order to clear the sear, you will need to push and hold the striker forward.  
Then pull the trigger to disengage the sear.
2. The striker should now be clear of the sear. If it is caught again, repeat the actions described in step one.
3. Insert Pump Bolt (PB03) into the Pump Sled (PB01)
4. Insert the Pump Bolt Pin (PBP3) into the hole, located above the Pump Sled (PB01).  
Be sure to push the Pump Bolt Pin (PBP3) all the way down.
5. Insert the Pump Spring (PSS2) into the lower tube.
6. Insert the End Cap (EC01) into the back of the marker.  
Check to see that the Velocity Adjuster (VA01) goes through the Pump Striker Spring (PSS2).
7. Turn the End Cap clockwise until it is flush with the body.

## TROUBLESHOOTING

**WARINIG: Remove all paintballs, loaders, and air tanks before disassembling the marker.**

Symptoms	Repair Step(s)
Leaks down the barrel / body and trigger frame	1. Tighten M8 x 8L Screw 2. Replace Zero Cup Seal (ZCS2) 3. Replace Orings RP15 and R015 4. Replace Valve (MFV2)
Leaks between Body and Vertical Adapter	1. Replace R015 Oring between Vertical Adapter (VAS1) and Body (KP3B)
Leaks from middle of the regulator, small hole above the set screw	1. Replace RV08 Oring 2. Replace RV14 Oring 3. Reset Regulator, refer to PG. 8
Leaks from the regulator, small hole on the bottom near the swivel	1. Replace RV11 Oring
Leaks from ASA, small hole on the bottom (nearest the tank)	1. Replace the Tank's Oring
Leaks from ASA, small hole on the bottom (nearest the screw knob (BAC2)	1. Replace the RV08 Oring that is held in by the Retaining Screw (BARS)

## TROUBLESHOOTING



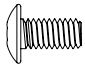
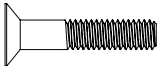

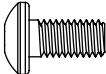

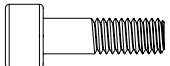

**WARINIG: Remove all paintballs, loaders, and air tanks before disassembling the marker.**

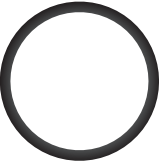









Symptoms	Repair Step(s)
Leaks from Pump Guide (PG01) / Zero Pump Cap (ZPC1)	1. Replace R010 Oring 2. Replace RV10 Oring
Loose ASA	1. Tighten M5 x 10L screw located inside of the trigger framea
Striker is not catching the sear when pump handle is pulled back	1. Striker may not be in the right orientation. Rotate the striker 180 degrees. 2. Check to make sure the Bolt Pin (PBP3) is pushed all the way down

If you have questions or require further assistance, please contact Azodin Paintball.

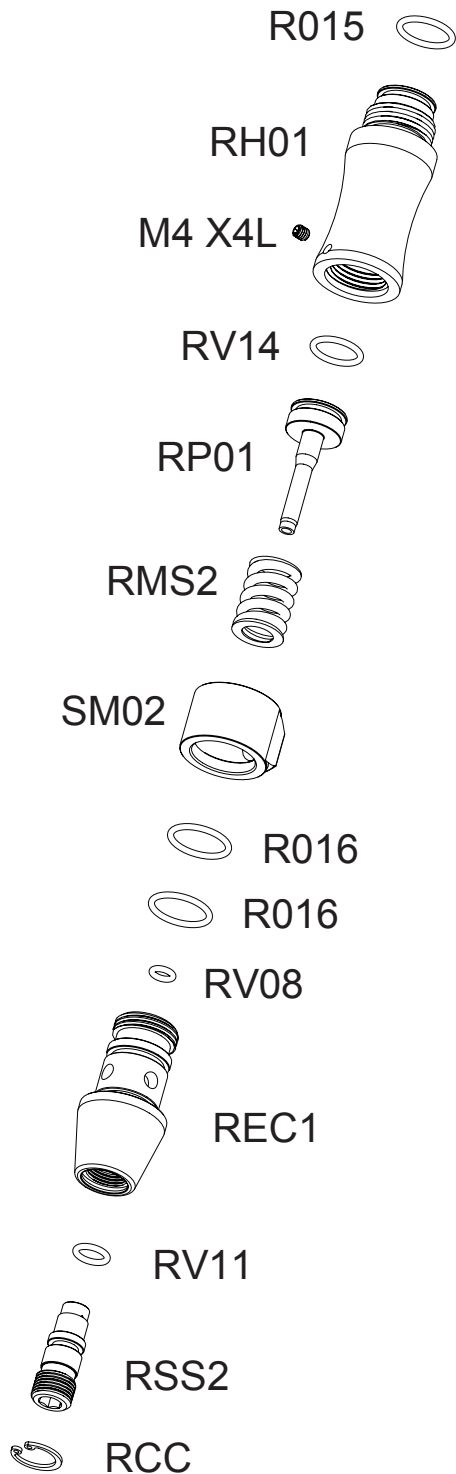
Email: [tech@azodin.com](mailto:tech@azodin.com)

Phone: 909-468-3600

KP-III SCREW CHART SIZE: 1:1	PART NUMBER AND NAME
	<b>M3 X 3.5L DETENT COVER SCREW</b>
	<b>M4 X 4L RETAINING SCREW</b>
	<b>M4 X 8L GRIP PANEL SCREW</b>
	<b>M4 X 20L PUMP PLATE SCREW</b>
	<b>M5 X 10L BOTTOM ASA RETAINING SCREW</b>
	<b>M5 X 10L MAIN BODY SCREW</b>
	<b>M5 X 12L VERTICAL ASA SCREW</b>
	<b>M5 X 14L FEEDNECK SCREW</b>
	<b>M8 X 8L VALVE SCREW</b>

KP-III O-RING CHART SIZE: 1:1	PART NUMBER AND NAME
	<b>PB01 BARREL O-RING</b>
	<b>R010 NO.10 O-RING (BLACK)</b>
	<b>R014 NO.14 O-RING (BLACK)</b>
	<b>R015 NO.15 O-RING (BLACK)</b>
	<b>R016 NO.16 O-RING (BLACK)</b>
	<b>RP15 NO.15 O-RING (CLEAR)</b>
	<b>RV08 NO.08 O-RING (BROWN)</b>
	<b>RV10 NO.10 O-RING (BROWN)</b>
	<b>RV11 NO.11 O-RING (BROWN)</b>
	<b>RV14 NO.14 O-RING (BROWN)</b>

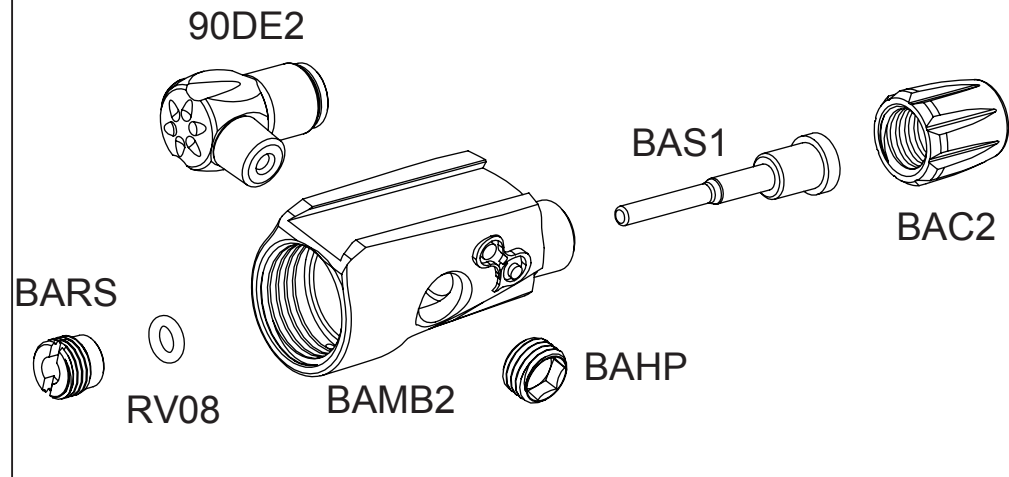
## A062 INLINE REGULATOR



## REGULATOR PARTS LIST

NO	PART NAME
RH01	REGULATOR HOUSING
RP01	REGULATOR PISTON
RMS2	REGULATOR MAIN SPRING
SM02	SWIVEL MOUNT
REC1	REGULATOR END CAP
RSS2	ROCK STEADY SEAT
RCC	REGULATOR C CLIP
R015	NO.15 O-RING (BLACK)
R016	NO.16 O-RING (BLACK)
RV08	NO.8 O-RING (BROWN)
RV11	NO.11 O-RING (BROWN)
RV14	NO.14 O-RING (BROWN)
M4 X 4L	RETAINING SCREW

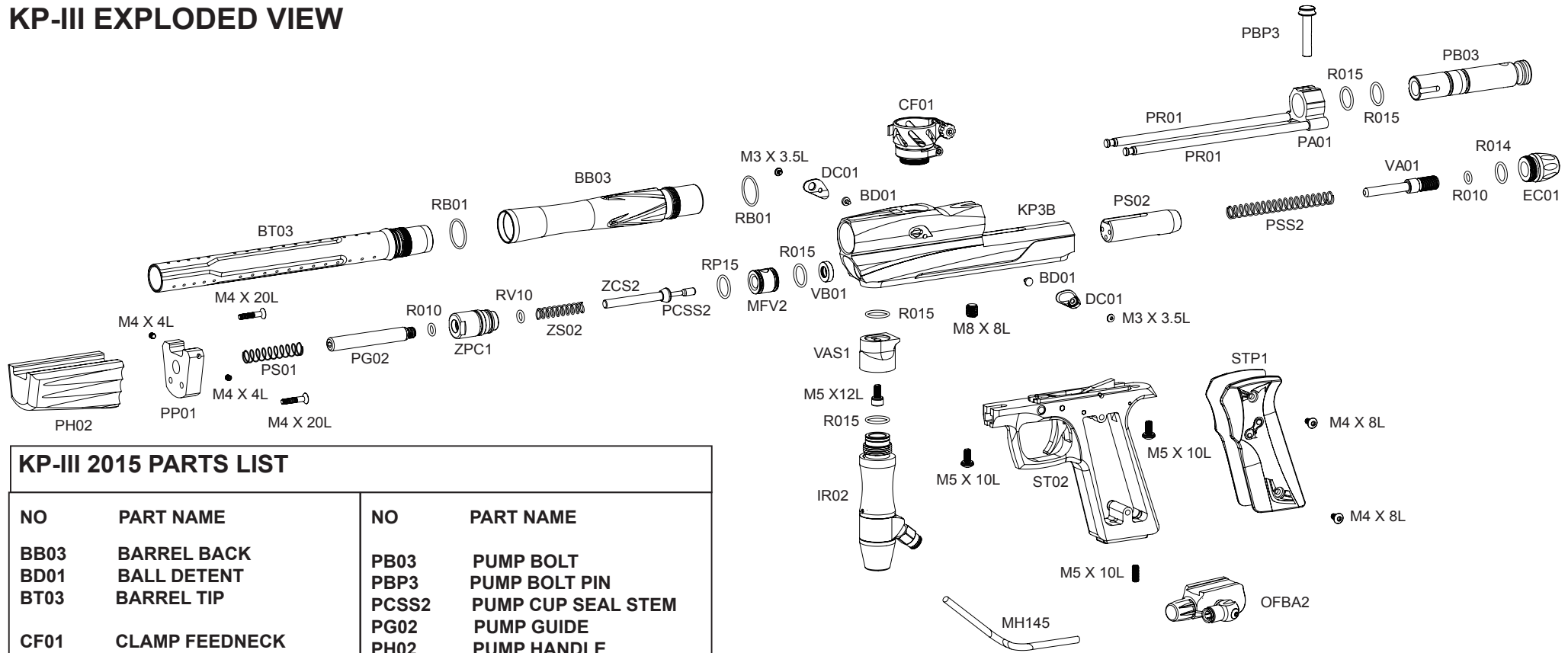
## ON/OFF BOTTOM ASA EXPLODED VIEW



## ON/OFF BOTTOM ASA PARTS LIST

NO	PART NAME
90DE2	COLOR 90 DEGREE ELBOW
BAS1	ON/OFF BOTTOM ASA STEM
BAC2	ON/OFF BOTTOM ASA CAP
BAHP	ON/OFF BOTTOM ASA HOSE PLUG
BAMB2	ON/OFF BOTTOM ASA MAIN BODY
BARS	ON/OFF BOTTOM ASA RETANING SCREW
VRV08	NO.8 O-RING (BROWN)

# KP-III EXPLODED VIEW



## KP-III 2015 PARTS LIST

NO	PART NAME	NO	PART NAME
BB03	BARREL BACK	PB03	PUMP BOLT
BD01	BALL DETENT	PBP3	PUMP BOLT PIN
BT03	BARREL TIP	PCSS2	PUMP CUP SEAL STEM
CF01	CLAMP FEEDNECK	PG02	PUMP GUIDE
DC01	DETENT COVER	PH02	PUMP HANDLE
EC01	END CAP	PP01	PUMP PLATE
KP3B	KP3 BODY	PR01	PUMP ROD
IR02	INLINE REGULATOR	PS01	PUMP SPRING
M3 X 3.5L	DETENT COVER SCREW	PS02	PUMP STRIKER
M5 X 12L	VERTICAL ASA SCREW	PSS2	PUMP STRIKER SPRING
M8 X 8L	VALVE SCREW	R010	NO.10 O-RING(BLACK)
M4 X 4L	RETAINING SCREW	R014	NO.14 O-RING(BLACK)
M4 X 20L	PUMP PLATE SCRW	R015	NO.15 O-RING(BLACK)
M5 X 10L	MAIN BODY SCREW	RB01	BARREL O-RING
M5 X 10L	BOTTOM ASA RETAINING SCREW	RP15	NO.15 O-RING(CLEAR)
M4 X 8L	GRIP PANEL SCREW	RV10	NO.10 O-RING(BROWN)
MFV2	MASS FLOW VALVE	ST02	SINGLE TRIGGER ASSEMBLY
MH145	145MM MACROLINE HOSE	STP1	SINGLE TRIGGER PANEL
OFBA2	ON/OFF BOTTOM ASA	VA01	VELOCITY ADJUSTOR
PA01	PUMP SLIED	VAS1	VERTICAL ASA
		VB01	VALVE BUMPER
		ZPC1	ZERO PUMP CAP
		ZS02	ZERO SPRING
		ZCS2	ZZZZZERO CUP SEAL